

## TIGER INDIA PRIVATE LIMITED

[ Established ] April 18, 2015  
[ Head office ] Gurgaon, Haryana  
[ Business ] Importer & Sales of vacuum bottles and household products for daily use

## TIGER CORPORATION

[ Established ] February 3, 1923  
[ Head office ] Osaka, Japan  
[ Production bases ] Japan, China, Vietnam  
[ Sales offices ] Japan, China, Hong Kong, Taiwan, U.S.A. , India  
[ Business ] Manufacture and sales of vacuum bottles and household products for daily use



Spreading joyous  
harmony throughout  
the world.



### TIGER INDIA PRIVATE LIMITED

**Head office:**  
Unit No.108, 1st Floor, Suncity Business Tower,  
Golf Course Road, Sector 54, Gurugram, Haryana 122002, India  
Tel: +91-124-4255-176 | +91 124-4203-177  
E-mail: [marketing@tigercorp.in](mailto:marketing@tigercorp.in)  
Website: <https://www.tigercorp.in/>

DISTRIBUTOR :



General Products & Collection Vol.22 2018



Spreading joyous harmony throughout the world.  
Established in 1923, Japan quality

Freshly cooked warm rice, heartwarming hot coffee and refreshing cold tea.

Happiness of having delicious meal. Happiness of spending time around the dining table.

TIGER spreads smiles at the dining table throughout the world by magic inside our product.



## Lunch Boxes

### Lunch boxes

#### LWU-F200

4 container

- Capacity**
- Rice container 0.61L
  - Side dish container 0.30L (×2)
  - Soup container 0.27L

**Super Clean**

- Vacuum insulated stainless double wall
- Four compartments (1 soup, 1 rice and 2 side dish containers)
- Microwavable containers
- Exclusive bag



Warm Silver (SE)

Model No.	LWU-F200	3Cups
Capacity	Rice container 0.61L Side dish container 0.30L (×2) Soup container 0.27L	
Heat retention	70°C (6h)	
Size / Weight	15.0×14.7×25.6cm / 1.40kg	
Qty/Ctn (Measurement)	6pcs (0.052m <sup>3</sup> )	
Gross Weight	10.3kg	
JAN	4904710387726	

**BPA free** Made of BPA-free plastic, stainless steel and silicone rubber

#### LWU B

3 container

- Capacity**
- |                       |          |          |
|-----------------------|----------|----------|
|                       | LWU-B170 | LWU-B200 |
| • Rice container      | 0.61L    | 0.80L    |
| • Side dish container | 0.34L    | 0.34L    |
| • Soup container      | 0.27L    | 0.27L    |

**Super Clean**

- Vacuum insulated stainless double wall
- Microwavable containers
- Exclusive bag



Warm Silver (SE)

The above images are 4Cups.

Model No.	LWU-B170	LWU-B200
	3Cups	4Cups
Capacity	Rice container 0.61L Side dish container 0.34L Soup container 0.27L	Rice container 0.80L Side dish container 0.34L Soup container 0.27L
Heat retention	69°C (6h)	72°C (6h)
Size / Weight	15.0×14.7×21.4cm / 0.90kg	15.0×14.7×23.6cm / 1.00kg
Qty/Ctn (Measurement)	6pcs (0.043m <sup>3</sup> )	6pcs (0.046m <sup>3</sup> )
Gross Weight	9.3kg	9.8kg
JAN	4904710344378	4904710344422

**BPA free** Made of BPA-free plastic, stainless steel and silicone rubber

#### LWU-A171

3 container

- Capacity**
- Rice container 0.61L
  - Side dish container 0.34L
  - Soup container 0.27L

**Super Clean**

- Vacuum insulated stainless double wall
- Microwavable containers



Charcoal Gray (HD)

Model No.	LWU-A171	3Cups
Capacity	Rice container 0.61L Side dish container 0.34L Soup container 0.27L	
Heat retention	69°C (6h)	
Size / Weight	15.0×14.7×21.4cm / 1.00kg	
Qty/Ctn (Measurement)	6pcs (0.035m <sup>3</sup> )	
Gross Weight	7.6kg	
JAN	4904710353707	

**BPA free** Made of BPA-free plastic, stainless steel and silicone rubber

#### LWY-T036

1.8Cups

- Capacity**
- Rice container 0.36L
  - Side dish container 0.21L (×2)

- Compact design
- Microwavable containers
- Exclusive bag



Black (K)

Model No.	LWY-T036	1.8Cups
Capacity	Rice container 0.36L Side dish container 0.21L (×2)	
Temperature retention	49°C (6h)	
Size / Weight	21.0×11.2×12.1cm / 0.61kg	
Qty/Ctn (Measurement)	6pcs (0.032m <sup>3</sup> )	
Gross Weight	4.7kg	
JAN	4904710369425	

**BPA free** Made of BPA-free plastic, stainless steel and silicone rubber

\*Heat retention has been calculated under the condition of adding hot water at 95°C±1°C and leaving it in a room temperature of 20°C±2°C for 1hour or 6hours.  
\*Cold retention has been calculated under the condition of adding cold water at 4°C±1°C and leaving it in a room temperature of 20°C±2°C for 6hours.

Lunch boxes

**LWR-A092**

3 container



- Capacity**
- Rice container 0.32L
  - Side dish container 0.23L
  - Soup container 0.21L

**Super Clean**

**Made in Japan**

- Vacuum insulated stainless double wall
- Compact design
- Microwavable containers
- Exclusive bag

Model No.	LWR-A092	1.5Cups
Capacity	Rice container 0.32L Side dish container 0.23L Soup container 0.21L	
Heat retention	66°C (6h)	
Size / Weight	10.9×10.7×21.5cm / 0.67kg	
Qty/Ctn (Measurement)	6pcs (0.027m <sup>3</sup> )	
Gross Weight	5.9kg	
JAN	(NN) 4904710342329 (PG) 4904710342336	

**BPA free** Made of BPA-free plastic, stainless steel and silicone rubber

**LWR-A072**

2 container



- Capacity**
- Rice container 0.32L
  - Side dish container 0.23L

**Super Clean**

**Made in Japan**

- Vacuum insulated stainless double wall
- Compact design
- Microwavable containers
- Exclusive bag

Model No.	LWR-A072	1.5Cups
Capacity	Rice container 0.32L Side dish container 0.23L	
Heat retention	50°C (6h)	
Size / Weight	10.9×10.7×15.3cm / 0.48kg	
Qty/Ctn (Measurement)	6pcs (0.023m <sup>3</sup> )	
Gross Weight	4.6kg	
JAN	(NN) 4904710342312 (PG) 4904710342305	

**BPA free** Made of BPA-free plastic, stainless steel and silicone rubber

**LCC-A030**

0.3L



- Capacity**
- Food jar 0.32L
  - Container 0.25L

**Super Clean**

- Vacuum insulated stainless double wall
- Both rice and soup kept warm by food jar
- Carrying pouch

Model No.	LCC-A030
Capacity	0.32L
Liquid Capacity Line	0.30L
Heat retention	50°C (6h)
Cold retention	12°C (6h)
Size / Weight	10.0×10.0×16.2cm / 0.33kg
Qty/Ctn (Measurement)	20pcs (0.042m <sup>3</sup> )
Gross Weight	8.8kg
JAN	(P) 4904710420805 (Y) 4904710420812

**BPA free** Made of BPA-free plastic, stainless steel and silicone rubber

**MCJ-A**

0.5L  
0.75L



- Wide mouth cup design
- Vacuum insulated stainless double wall
- Exclusive bag with utensil holder
- Super clean process
- 7.8cm wide mouth
- Washable entirely
- Compact body



Model No.	MCJ-A050	MCJ-A075
Capacity	0.50L	0.75L
Heat retention	83°C (1h) / 62°C (6h)	86°C (1h) / 70°C (6h)
Cold retention	10°C (6h)	8°C (6h)
Size / Weight	9.9×9.9×11.6cm / 0.32kg	9.9×9.9×15.3cm / 0.39kg
Qty/Ctn (Measurement)	12pcs (0.028m <sup>3</sup> )	12pcs (0.034m <sup>3</sup> )
Gross Weight	6.6kg	7.6kg
JAN	(CK) 4904710415801 (PF) 4904710415795	(CK) 4904710415818 (T) 4904710415825

**BPA free** Made of BPA-free plastic, stainless steel and silicone rubber

Food jars

**MCL-B**

0.3L  
0.38L



The above images are 0.38L.



hot & cold

**Super Clean**

- Vacuum insulated stainless double wall
- Screw cap
- Leak proof lid
- Washable entirely



Model No.	MCL-B030	MCL-B038
Capacity	0.32L	0.40L
Liquid Capacity Line	0.30L	0.38L
Heat retention	54°C (6h)	59°C (6h)
Cold retention	12°C (6h)	10°C (6h)
Size / Weight	9.0×9.0×11.9cm / 0.26kg	9.0×9.0×13.9cm / 0.30kg
Qty/Ctn (Measurement)	20pcs (0.027m <sup>3</sup> )	20pcs (0.031m <sup>3</sup> )
Gross Weight	7.0kg	7.7kg
JAN	(AI) 4904710422489 (RC) 4904710422496 (YS) 4904710422472	(AI) 4904710422441 (RC) 4904710422458 (YS) 4904710422465

**MCA-C025**

0.25L

**NEW**



**Super Clean**

- Vacuum insulated stainless double wall
- Compact and light to store in bags
- Washable entirely

Model No.	MCA-C025
Capacity	0.25L
Heat retention	56°C (6h)
Cold retention	12°C (6h)
Size / Weight	7.5×7.5×10.9cm / 0.17kg
Qty/Ctn (Measurement)	20pcs (0.017m <sup>3</sup> )
Gross Weight	4.8kg
JAN	(AS) 4904710428306 (PO) 4904710428313 (TC) 4904710428320 (WS) 4904710428337 (XC) 4904710428344



\*Dimensions : width x depth x height

\*For the purpose of performance improvement, designs, specifications and parts shown in this publication are subject to change without notice.

# Stainless Steel Bottles

## Stainless Steel Bottles

### MMZ-A

- 0.35L
- 0.5L
- 0.6L



Smooth rimmed mouth



Super Clean Plus (Image Only)



Brown (TV) (A035/A050) Bright Pink (PH) (A035/A050) Clear Stainless (XC) (A035/A050) White (WP) (A035/A050) Agate (RY) (A060) Clear Stainless (XC) (A060)  
The above images are 0.35L. The above images are 0.6L.



Ultra light

Super Clean Plus

- Vacuum insulated stainless double wall
- Smooth rimmed mouth
- Wide-mouth 4.7cm
- Compact and light to store in bags
- Washable entirely

Model No.	MMZ-A035	MMZ-A050	MMZ-A060
Capacity	0.35L	0.50L	0.60L
Heat retention	86°C (1h) / 69°C (6h)	88°C (1h) / 74°C (6h)	89°C (1h) / 76°C (6h)
Cold retention	8°C (6h)	7°C (6h)	7°C (6h)
Size / Weight	6.6x6.6x16.4cm / 0.17kg	6.6x6.6x21.6cm / 0.19kg	6.6x6.6x25.1cm / 0.23kg
Qty/Ctn (Measurement)	20pcs (0.020m <sup>3</sup> )	20pcs (0.026m <sup>3</sup> )	20pcs (0.030m <sup>3</sup> )
Gross Weight	4.7kg	5.5kg	6.5kg
JAN	(TV) 4904710415849 (PH) 4904710415856 (XC) 4904710415832 (WP) 4904710415863	(TV) 4904710415887 (PH) 4904710415931 (XC) 4904710415870 (WP) 4904710415900	(RY) 4904710415924 (XC) 4904710415917

## Even stronger against stains and odors with Super Clean Plus

The inside of the bottle has been given a smooth and polished interior. Tough against stains and odors.



Please clean immediately after use.

Sports drinks OK



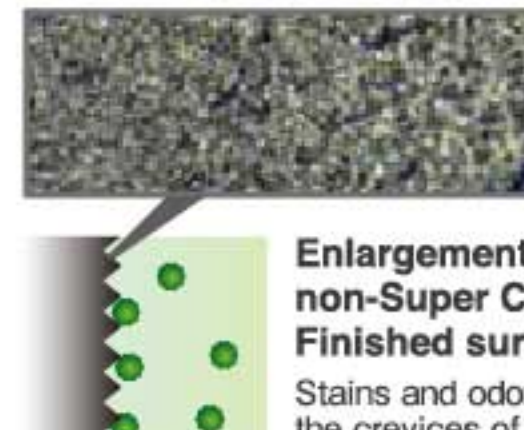
Enlargement of Super Clean Plus Finished surface.

The smoothly finished surface is tough against stains and rust.



Enlargement of Super Clean Finished surface.

The smoothly finished surface is tough against stains and rust.



Enlargement of non-Super Clean Finished surface.

Stains and odors remain in the crevices of the rough surface.

### MMP-J

- 0.2L
- 0.3L



Ultra light

Weight has been reduced by 15%.  
※ When MMP-J020 is compared to MMP-A020 (2012 model)

Super Clean Plus

- Vacuum insulated stainless double wall
- Smooth rimmed mouth
- Lightest model in the series
- Compact and light to store in bags
- Washable entirely

Ultra light bottle Previous model



Powder Green (GP) Powder Black (KP) Powder Pink (PP) Clear Stainless (XC)

The above images are 0.3L.

Model No.	MMP-J020	MMP-J030
Capacity	0.20L	0.30L
Heat retention	83°C (1h) / 60°C (6h)	86°C (1h) / 68°C (6h)
Cold retention	10°C (6h)	9°C (6h)
Size / Weight	5.8x5.8x12.9cm / 0.11kg	5.8x5.8x17.6cm / 0.14kg
Qty/Ctn (Measurement)	20pcs (0.013m <sup>3</sup> )	20pcs (0.017m <sup>3</sup> )
Gross Weight	3.3kg	4.0kg
JAN	(GP) 4904710422601 (PP) 4904710422625 (KP) 4904710422618 (XC) 4904710422632	(GP) 4904710422656 (PP) 4904710422670 (KP) 4904710422663 (XC) 4904710422649

\*Dimensions : width x depth x height

\*For the purpose of performance improvement, designs, specifications and parts shown in this publication are subject to change without notice.

## Stainless Steel Bottles

### MCZ-A

- 0.6L
- 0.8L

NEW

Made in Vietnam

- Vacuum insulated stainless double wall
- Smooth rimmed mouth
- Ice stopper



Shadow Gray (H) (A060) Lilac Pink (P) (A060) Smoke White (W) (A060) Calm Blue (A) (A080) Canyon Black (K) (A080)

Direct Drink Bottle

Ultra light

Super Clean Plus

Model No.	MCZ-A060	MCZ-A080
Capacity	0.60L	0.80L
Heat retention	67°C (6h)	72°C (6h)
Cold retention	9°C (6h)	8°C (6h)
Size / Weight	7.8x7.8x24.5cm / 0.2kg	7.8x7.8x29.4cm / 0.2kg
Qty/Ctn (Measurement)	20pcs (0.020m <sup>3</sup> )	20pcs (0.020m <sup>3</sup> )
Gross Weight	7.99kg	7.99kg
JAN	(H) 4904710428481 (P) 4904710428498 (W) 4904710428504	(A) 4904710428511 (K) 4904710428528

### MCY-A

- 0.35L
- 0.5L
- 0.6L

- Vacuum insulated stainless double wall
- Smooth rimmed mouth
- Ice stopper

Made in Vietnam



Detachable stopper for cleanliness



Sky Blue (AK) (A035/A050) Rose Pink (PS) (A035/A050) Cream White (WM) (A035/A050) Mauve Black (KM) (A060) Champagne Gold (NP) (A060)

The above images are 0.35L.

The above images are 0.6L.



Ultra light

Super Clean Plus

- Vacuum insulated stainless double wall
- Smooth rimmed mouth
- Entirely washable
- Ice stopper

Model No.	MCY-A035	MCY-A050	MCY-A060
Capacity	0.35L	0.50L	0.60L
Heat retention	85°C(1h) / 65°C(6h)	86°C(1h) / 71°C(6h)	87°C(1h) / 73°C(6h)
Cold retention	9°C(6h)	8°C(6h)	8°C(6h)
Size / Weight	6.6x6.6x17.6cm / 0.17kg	6.6x6.6x22.7cm / 0.21kg	6.9x6.9x24.2cm / 0.23kg
Qty/Ctn (Measurement)	20pcs (0.024m <sup>3</sup> )	20pcs (0.030m <sup>3</sup> )	20pcs (0.033m <sup>3</sup> )
Gross Weight	5.0kg	6.0kg	6.7kg
JAN	(AK) 4904710424841 (PS) 4904710424858 (WM) 4904710424865	(KM) 4904710424872 (PS) 4904710424889 (WM) 4904710424896	(NP) 4904710424902 (NP) 4904710424919

## Citric Acid

### Lighter than ever!

Pressing process of stainless steel plate for the thinnest inner shell.

### Spinning process for thinnest inner shell

A roller presses the stainless steel plate to make it thin.

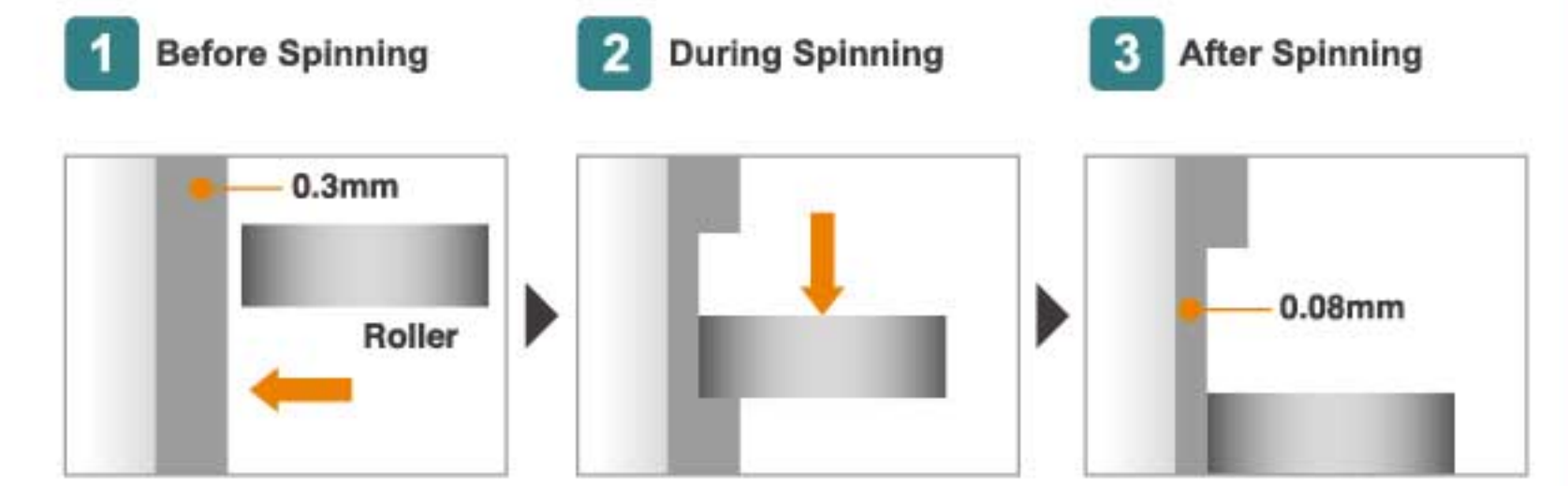
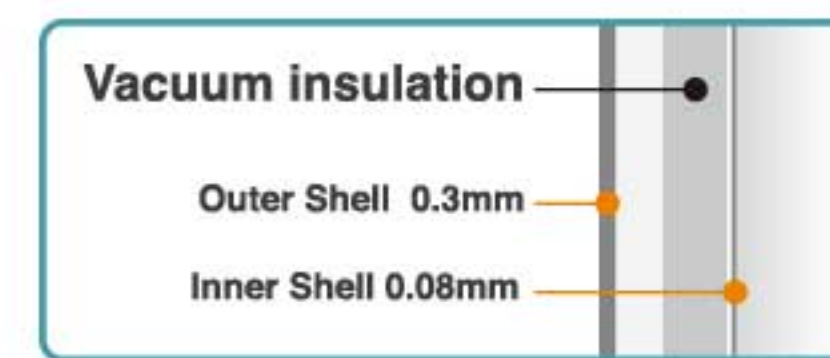


Image Only

\*Heat retention has been calculated under the condition of adding hot water at 95°C±1°C and leaving it in a room temperature of 20°C±2°C for 1 hour or 6 hours.  
\*Cold retention has been calculated under the condition of adding cold water at 4°C±1°C and leaving it in a room temperature of 20°C±2°C for 6 hours.

Stainless Steel Bottles

MJA-A

- 0.24L
- 0.36L
- 0.48L



Direct Drink Bottle

Super Clean

- Vacuum insulated stainless double wall
- Portable at only 145g\*\*
- light weight and compact design
- \*0.24L type
- Washable

Made in Japan

Model No.	MJA-A024	MJA-A036
Capacity	0.24L	0.36L
Heat retention	83°C (1h) / 55°C (6h)	86°C (1h) / 65°C (6h)
Cold retention	10°C (6h)	9°C (6h)
Size / Weight	7.0×7.0×12.5cm / 0.14kg	7.0×7.0×16.5cm / 0.17kg
Qty/Ctn (Measurement)	12pcs (0.012m³)	12pcs (0.015m³)
Gross Weight	2.6kg	3.1kg
JAN	(AM) 4904710397527 (KC) 4904710397541 (PR) 4904710397558 (WP) 4904710397725 (XC) 4904710397565	(AM) 4904710397572 (KC) 4904710397596 (PR) 4904710397602 (WP) 4904710397732 (XC) 4904710397619

Model No.	MJA-A048
Capacity	0.48L
Heat retention	87°C (1h) / 71°C (6h)
Cold retention	9°C (6h)
Size / Weight	7.0×7.0×20.5cm / 0.21kg
Qty/Ctn (Measurement)	12pcs (0.018m³)
Gross Weight	3.6kg
JAN	(AM) 4904710397626 (WP) 4904710397749 (KC) 4904710397640 (XC) 4904710397664 (PR) 4904710397657

**Easy to clean Super clean finished process**

Coffee/tea stains and odors stick easily to rough stainless steel surfaces.

By making the surface smooth with mirror finish process, stains or odors are unlikely to remain.

**Keep clean**

**Vacuum Insulation**

**Washable!!** (Image Only)

**Super Clean** (Image Only)

**Without Super Clean** (Image Only)

MMJ-A

- 0.36L
- 0.48L
- 0.6L



Open with one push

Blue Black (KA) (A036/A048)

Passion Pink (PA) (A036/A048)

Snow White (WW) (A036/A048)

Clear Stainless (XC) (A036/A048)

Snow White (WW) (A060)

Clear Stainless (XC) (A060)

Direct Drink Bottle

Ultra light

Super Clean Plus

- Vacuum insulated stainless double wall
- One hand lock & one push open
- Keep hot / cold
- Washable

Model No.	MMJ-A036	MMJ-A048	MMJ-A060
Capacity	0.36L	0.48L	0.60L
Heat retention	85°C (1h) / 63°C (6h)	86°C (1h) / 68°C (6h)	87°C (1h) / 72°C (6h)
Cold retention	9°C (6h)	8°C (6h)	7°C (6h)
Size / Weight	6.6×7.2×17.6cm / 0.17kg	6.6×7.2×21.8cm / 0.19kg	6.6×7.2×26.0cm / 0.23kg
Qty/Ctn (Measurement)	20pcs (0.021m³)	20pcs (0.027m³)	20pcs (0.031m³)
Gross Weight	4.9kg	5.5kg	6.3kg
JAN	(KA) 4904710419342 (PA) 4904710419366 (WW) 4904710419373 (XC) 4904710419359	(KA) 4904710419380 (PA) 4904710419403 (WW) 4904710419410 (XC) 4904710419397	(WW) 4904710419335 (XC) 4904710419328

\*Dimensions : width x depth x height

\*For the purpose of performance improvement, designs, specifications and parts shown in this publication are subject to change without notice.

Stainless Steel Bottles

MCX-A

Made in Vietnam

- 0.35L
- 0.5L
- 0.6L



Open and auto lock with slide push

Direct Drink Bottle

Ultra light

Super Clean Plus

- Vacuum insulated stainless double wall
- One push open and automatic lock
- Entirely washable



Sky Blue (AK) (A351/A501)

Lump Black (KL) (A351/A501)

Opera Pink (PO) (A351/A501)

Matte Black (KM) (A601)

Matte Silver (ST) (A601)

The above images are 0.35L.

The above images are 0.6L.

Model No.	MCX-A351	MCX-A501	MCX-A601
Capacity	0.35L	0.50L	0.60L
Heat retention	85°C(1h) / 63°C(6h)	86°C(1h) / 69°C(6h)	87°C(1h) / 72°C(6h)
Cold retention	9°C(6h)	8°C(6h)	8°C(6h)
Size / Weight	6.6×6.6×18.0cm / 0.17kg	6.6×6.6×23.1cm / 0.21kg	6.9×6.9×24.6cm / 0.23kg
Qty/Ctn (Measurement)	20pcs(0.024m³)	20pcs(0.030m³)	20pcs(0.033m³)
Gross Weight	4.9kg	5.9kg	6.4kg
JAN	(AK)4904710424766 (KL)4904710424773 (PO)4904710424780	(AK)4904710424827 (KL)4904710424810 (PO)4904710424834	(KM)4904710424797 (ST)4904710424803

MCB-H

- 0.36L
- 0.48L



Raspberry Pink (PR)

Gun Metallic (HG)

The above images are 0.36L.

Direct Drink Bottle

Super Clean

- Vacuum insulated stainless double wall
- One push open
- Compact and light to store in bags
- For coffee/tea break at the office
- Washable entirely



One push open the lid on

Model No.	MCB-H036	MCB-H048
Capacity	0.36L	0.48L
Heat retention	84°C (1h) / 59°C (6h)	85°C (1h) / 65°C (6h)
Cold retention	8°C (6h)	7°C (6h)
Size / Weight	7.2×7.2×18.6cm / 0.22kg	7.2×7.2×22.4cm / 0.26kg
Qty/Ctn (Measurement)	12pcs (0.016m³)	12pcs (0.02m³)
Gross Weight	3.6kg	4.2kg
JAN	(HG) 4904710401613 (PR) 4904710401620	(HG) 4904710401637 (PR) 4904710401644

MHK-A

- 1.2L
- 1.49L
- 1.65L
- 2.0L



Clear Stainless (XC)

Protecting guard



Retractable handle

Super Clean

- Vacuum insulated stainless double wall
- With carrying strap
- Take-apart stopper
- For outdoor use

- 7.0cm wide mouth
- Retractable handle
- Washable entirely
- Protecting guard

Model No.	MHK-A120	MHK-A150
Capacity	1.20L	1.49L
Heat retention	78°C (6h) / 55°C (24h)	80°C (6h) / 57°C (24h)
Size / Weight	12.3×13.1×26.5cm / 0.95kg	12.3×13.1×30.5cm / 1.06kg
Qty/Ctn (Measurement)	6pcs (0.030m³)	6pcs (0.035m³)
Gross Weight	6.8kg	7.7kg
JAN	4904710372524	4904710372562

Model No.	MHK-A170	MHK-A200
Capacity	1.65L	2.00L
Heat retention	80°C (6h) / 58°C (24h)	81°C (6h) / 62°C (24h)
Size / Weight	12.3×13.1×32.4cm / 1.11kg	12.3×13.1×37.1cm / 1.24kg
Qty/Ctn (Measurement)	6pcs (0.037m³)	6pcs (0.042m³)
Gross Weight	8.0kg	9.0kg
JAN	4904710372609	4904710372647

\*Heat retention has been calculated under the condition of adding hot water at 95°C±1°C and leaving it in a room temperature of 20°C±2°C for 1 hour or 6 hours.  
\*Cold retention has been calculated under the condition of adding cold water at 4°C±1°C and leaving it in a room temperature of 20°C±2°C for 6 hours.

## Stainless Steel Bottles

### MMN-F

1.0L  
1.5L

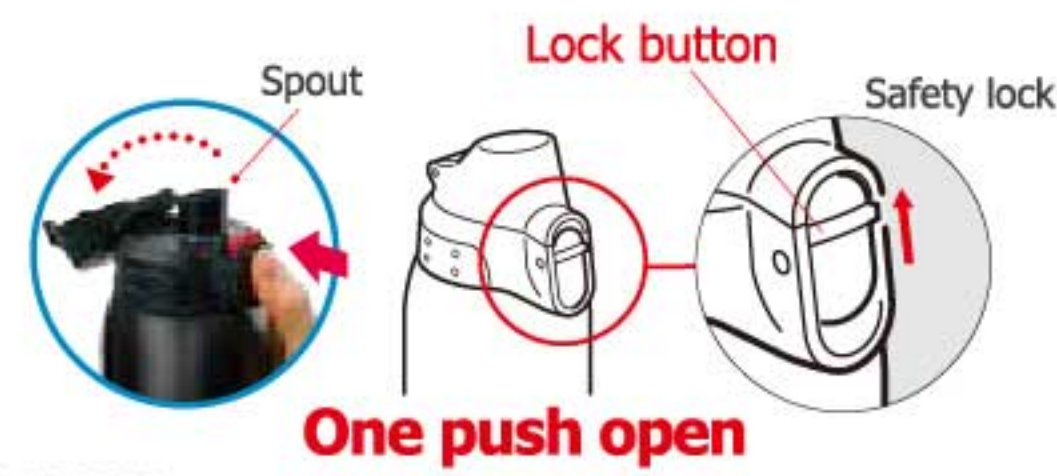


Black (K) Pink (P) (F100 Only) Picture w/o holder

The above images are 1.0L

Direct Drink Bottle

- With carrying belt
- Cold drink only
- Exclusive holder
- Pop-up lid
- Super clean finished process
- Washable entirely



Model No.	MMN-F100	MMN-F150
Capacity	1.00L	1.50L
Cold retention	9°C (6h)	8°C (6h)
Size / Weight	8.4×8.5×28.1cm / 0.49kg	9.2×9.4×33.4cm / 0.59kg
Qty/Ctn (Measurement)	12pcs (0.037m³)	6pcs (0.026m³)
Gross Weight	7.5kg	4.7kg
JAN	(K) 4904710401712 (P) 4904710401729	(K) 4904710401736

### MBO-E

0.5L  
0.8L  
1.0L



Blue (A) (E050) Picture w/o holder

The above images are 0.5L

Pink (P) (E050) Picture w/o holder

Blue Flower (A) (E080/E100) Picture w/o holder

The above images are 0.8L

Black (K) (E080/E100) Picture w/o holder

Direct Drink Bottle

Super Clean

- Vacuum insulated stainless double wall
- 4.1cm wide mouth
- With carrying strap
- Sports drinks OK
- Machine washable exclusive holder
- Durable and long-lasting zipper
- Washable body & stopper



Direct or cup  
2 way style

Hard cushioned base  
Tough against wear and tear  
Product made in synthetic resin

Model No.	MBO-E050	MBO-E080
Capacity	Direct 0.54L Cup 0.50L	Direct 0.84L Cup 0.80L
Heat retention	Cup 73°C (6h) / 45°C (24h)	Cup 77°C (6h) / 51°C (24h)
Cold retention	Direct 8°C (6h)	Direct 8°C (6h)
Size / Weight	Direct 6.9×8.7×21.5cm / 0.33kg Cup 6.9×7.7×22.6cm / 0.31kg	Direct 8.4×9.5×23.8cm / 0.45kg Cup 8.4×9.5×25.0cm / 0.46kg
Qty/Ctn (Measurement)	12pcs (0.029m³)	12pcs (0.041m³)
Gross Weight	6.0kg	7.8kg
JAN	(A) 4904710419557 (P) 4904710419564	(A) 4904710419519 (K) 4904710419526

Model No.	MBO-E100
Capacity	Direct 1.05L Cup 1.00L
Heat retention	Cup 79°C (6h) / 57°C (24h)
Cold retention	Direct 8°C (6h)
Size / Weight	Direct 8.4×9.5×28.2cm / 0.52kg Cup 8.4×9.5×29.5cm / 0.51kg
Qty/Ctn (Measurement)	12pcs (0.047m³)
Gross Weight	8.7kg
JAN	(A) 4904710419540 (K) 4904710419533

## Desktop mugs

### MCI-A028

0.28L



Super Clean

- Vacuum insulated stainless double wall
- Keep hot & cold
- 5 colors to choose from
- Plastic base

Model No.	MCI-A028
Capacity	0.28L
Heat retention	8°C (1h)
Cold retention	64°C (1h)
Size / Weight	8.6×11.2×9.1cm / 0.19kg
Qty/Ctn (Measurement)	20pcs (0.024m³)
Gross Weight	4.8kg
JAN	(C) 4904710415757 (Y) 4904710415788 (T) 4904710415771 (R) 4904710415764 (A) 4904710415740

### CWN-A

0.36L  
0.48L



The above images are 0.36L

Super Clean

- Vacuum insulated stainless double wall
- With plastic cover
- With a stainless steel tea strainer attachment for brewing loose leaf tea



Model No.	CWN-A360	CWN-A480
Capacity	0.36L	0.48L
Heat retention	71°C (1h) / 38°C (6h)	75°C (1h) / 41°C (6h)
Size / Weight	11.9×8.7×12.2cm / 0.22kg	11.9×8.7×15.6cm / 0.27kg
Qty/Ctn (Measurement)	12pcs (0.019m³)	12pcs (0.024m³)
Gross Weight	3.8kg	4.4kg
JAN	(PI) 4904710422748 (TV) 4904710422755 (XC) 4904710422731	(PI) 4904710422779 (TV) 4904710422762 (XC) 4904710422786

### MCM-T050

0.5L



Super Clean

- Vacuum insulated stainless double wall
- With plastic cover
- With a stainless steel tea strainer attachment for brewing loose leaf tea



Model No.	MCM-T050
Capacity	0.50L
Heat retention	77°C (1h)
Size / Weight	11.4×8.0×15.0cm / 0.26kg
Qty/Ctn (Measurement)	12pcs (0.022m³)
Gross Weight	4.0kg
JAN	(NN) 4904710415221 (XC) 4904710415238

\*Dimensions : width x depth x height

\*For the purpose of performance improvement, designs, specifications and parts shown in this publication are subject to change without notice.

\*Heat retention has been calculated under the condition of adding hot water at 95°C±1°C and leaving it in a room temperature of 20°C±2°C for 1 hour or 6 hours.  
\*Cold retention has been calculated under the condition of adding cold water at 4°C±1°C and leaving it in a room temperature of 20°C±2°C for 6 hours.

# Handy Jugs

## Stainless steel handy jugs

### PWO-A

- 1.2L
- 1.6L
- 2.0L

NEW



White (W) (A120)

Aqua Blue (AC) (A120)



White (W) (A160)

Dark Gray (HD) (A160)

Aqua Blue (AC) (A160)

Super Clean Plus

- Compact & Light Weight
- Washable
- Super Clean Finish
- Open/Close Lever
- Take-apart stopper

Stainless

Model No.	PWO-A120	PWO-A160	PWO-A200
Capacity	1.20L	1.60L	2.00L
Heat retention	66°C (10h)	71°C (10h)	74°C (10h)
Cold retention	10°C (10h)	9°C (10h)	8°C (10h)
Size / Weight	13.0x16.6x20.8cm / 0.69kg	13.0x16.6x24.5cm / 0.76kg	13.0x16.6x28.2cm / 0.84kg
Qty/Ctn (Measurement)	6pcs(0.020m <sup>3</sup> )	6pcs(0.020m <sup>3</sup> )	6pcs(0.020m <sup>3</sup> )
Gross Weight	5.3kg	5.9kg	6.4kg
JAN	(AC) 4904710428139 (W) 4904710428146	(AC) 4904710428153 (HD) 4904710428177 (W) 4904710428160	(HD) 4904710428191 (W) 4904710428184

### PWM-B

- 1.2L
- 1.6L
- 2.0L



Open/close lever

7.5 cm wide mouth

One-touch detachable lid



Ivory (CA) (B120/B160/B200)

Brown (TV) (B120/B160)

The above images are 1.6L.

Super Clean

- Vacuum insulated stainless double wall
- Open/close lever for one hand serving
- Easy to clean one push removable lid
- Thoroughly washable to the bottom 7.5 cm wide mouth
- Quick release by pinching the open / close lever
- One-touch detachable lid

Stainless

Model No.	PWM-B120	PWM-B160	PWM-B200
Capacity	1.20L	1.60L	2.00L
Heat retention	67°C (10h) / 48°C (24h)	72°C (10h) / 54°C (24h)	75°C (10h) / 59°C (24h)
Spare refill	-	-	-
Size / Weight	12.7x16.3x20.0cm / 0.61kg	12.7x16.3x23.8cm / 0.69kg	12.7x16.3x27.5cm / 0.76kg
Qty/Ctn (Measurement)	6pcs (0.029m <sup>3</sup> )	6pcs (0.034m <sup>3</sup> )	6pcs (0.039m <sup>3</sup> )
Gross Weight	4.8kg	5.3kg	5.8kg
JAN	(CA) 4904710422687 (TV) 4904710422694	(CA) 4904710422717 (TV) 4904710422700	(CA) 4904710422724

## Stainless steel handy jug

### PWL-A

- 1.2L
- 1.6L
- 2.0L



Stainless (XS)

The above images are 1.2L.



Drip-free spout



Take-apart stopper for easy cleaning



Open/close lock on push lever

Super Clean

- Vacuum insulated stainless double wall
- Compact and spacious
- Light weight
- Take-apart stopper
- Open/close lever for one hand serving

Stainless

Model No.	PWL-A122	PWL-A162	PWL-A202
Capacity	1.20L	1.60L	2.00L
Heat retention	69°C (10h) / 49°C (24h)	72°C (10h) / 54°C (24h)	75°C (10h) / 59°C (24h)
Spare refill	-	-	-
Size / Weight	12.6x17.3x19.6cm / 0.63kg	12.6x17.3x23.3cm / 0.71kg	12.6x17.3x27.1cm / 0.79kg
Qty/Ctn (Measurement)	6pcs (0.030m <sup>3</sup> )	6pcs (0.035m <sup>3</sup> )	6pcs (0.040m <sup>3</sup> )
Gross Weight	5.0kg	5.7kg	6.3kg
JAN	4904710354636	4904710354759	4904710354711

### PWL-B

- 0.62L
- 1.22L
- 1.62L



Stainless (XS)

The above image is 0.60L.

Super Clean

- Vacuum insulated stainless double wall
- Compact and spacious
- Light weight
- Take-apart stopper
- Open/close lever for one hand serving

Stainless

Model No.	PWL-B062	PWL-B122	PWL-B162
Capacity	0.60L	1.20L	1.60L
Heat retention	54°C (10h) / 35°C (24h)	69°C (10h) / 49°C (24h)	72°C (10h) / 54°C (24h)
Spare refill	-	-	-
Size / Weight	11.8x16.5x14.7cm / 0.47kg	12.8x17.4x19.7cm / 0.6kg	12.8x17.4x23.4cm / 0.68kg
Qty/Ctn (Measurement)	12pcs (0.041m <sup>3</sup> )	6pcs (0.031m <sup>3</sup> )	6pcs (0.036m <sup>3</sup> )
Gross Weight	8.0kg	4.9kg	5.5kg
JAN	4904710353127	4904710353134	4904710353141



\*Heat retention has been calculated under the condition of adding hot water at 95°C±1°C and leaving it in a room temperature of 20°C±2°C for 10hours or 24hours.

\*Dimensions : width x depth x height

\*For the purpose of performance improvement, designs, specifications and parts shown in this publication are subject to change without notice.





## Handy jugs

### PRY-B

1.0L  
1.3L



Arabesque (SA)

The above image is 1.0L.

**Made in Japan**

- Vacuum insulated glass liner
- Open/close by slight turn on the stopper

Model No.	PRY-B100	PRY-B130
Capacity	1.00L	1.30L
Heat retention	66°C (10h) / 51°C (24h)	70°C (10h) / 55°C (24h)
Spare refill	010E	013E
Size / Weight	13.0×18.6×24.8cm / 0.80kg	13.0×18.6×28.8cm / 0.95kg
Qty/Ctn (Measurement)	12pcs (0.083m <sup>3</sup> )	12pcs (0.097m <sup>3</sup> )
Gross Weight	12.5kg	14.6kg
JAN	4904710396803	4904710396810

### PXJ

1.0L 1.3L  
1.6L 1.9L



Mirror (M)

The above image is 1.0L.

**Made in Japan**

- Vacuum insulated glass liner
- Open/close by slight turn on the stopper

Model No.	PXJ-1001	PXJ-1301
Capacity	1.00L	1.30L
Heat retention	66°C (10h) / 51°C (24h)	70°C (10h) / 55°C (24h)
Spare refill	010E	013E
Size / Weight	13.0×17.5×26.5cm / 0.82kg	13.0×17.5×29.5cm / 0.93kg
Qty/Ctn (Measurement)	12pcs (0.073m <sup>3</sup> )	12pcs (0.083m <sup>3</sup> )
Gross Weight	12.1kg	13.7kg
JAN	4904710191453	4904710191941

Model No.	PXJ-1601	PXJ-1901
Capacity	1.60L	1.90L
Heat retention	72°C (10h) / 58°C (24h)	74°C (10h) / 61°C (24h)
Spare refill	016E	019E
Size / Weight	13.0×17.8×33.9cm / 1.10kg	15.4×20.5×32.6cm / 1.20kg
Qty/Ctn (Measurement)	6pcs (0.050m <sup>3</sup> )	6pcs (0.063m <sup>3</sup> )
Gross Weight	7.9kg	8.9kg
JAN	4904710192436	4904710192795

### PXJ

1.0L 1.3L  
1.6L 1.9L



Gentle (UB)

The above images are 1.0L.

**Made in Japan**

- Vacuum insulated glass liner
- Open/close by slight turn on the stopper

Model No.	PXJ-1000	PXJ-1300
Capacity	1.00L	1.30L
Heat retention	66°C (10h) / 51°C (24h)	70°C (10h) / 55°C (24h)
Spare refill	010E	013E
Size / Weight	13.0×17.5×26.5cm / 0.82kg	13.0×17.5×29.5cm / 0.93kg
Qty/Ctn (Measurement)	12pcs (0.073m <sup>3</sup> )	12pcs (0.083m <sup>3</sup> )
Gross Weight	12.1kg	13.7kg
JAN	(UG) 4904710310281 (UB) 4904710300350	(UG) 4904710310298 (UB) 4904710300367

Model No.	PXJ-1600	PXJ-1900
Capacity	1.60L	1.90L
Heat retention	72°C (10h) / 58°C (24h)	74°C (10h) / 61°C (24h)
Spare refill	016E	019E
Size / Weight	13.0×17.8×33.9cm / 1.10kg	15.4×20.5×32.6cm / 1.20kg
Qty/Ctn (Measurement)	6pcs (0.050m <sup>3</sup> )	6pcs (0.063m <sup>3</sup> )
Gross Weight	7.9kg	8.9kg
JAN	(UG) 4904710310304 (UB) 4904710300374	(UG) 4904710310311 (UB) 4904710300381

### PXE-1000

1.0L



Copper (CP)

**Made in Japan**

- Vacuum insulated glass liner
- Open/close by slight turn on the stopper

Model No.	PXE-1000
Capacity	1.00L
Heat retention	66°C (10h) / 51°C (24h)
Spare refill	010E
Size / Weight	12.8×16.8×25.7cm / 0.91kg
Qty/Ctn (Measurement)	24pcs (0.138m <sup>3</sup> )
Gross Weight	23.5kg
JAN	(CP) 4904710190012

\*Dimensions : width x depth x height

\*For the purpose of performance improvement, designs, specifications and parts shown in this publication are subject to change without notice.

## Handy jugs

### PXC-100

1.0L



Chrome (CR)

**Made in Japan**

- Vacuum insulated glass liner
- Open/close by slight turn on the stopper

Model No.	PXC-100
Capacity	1.00L
Heat retention	66°C (10h) / 51°C (24h)
Spare refill	010E
Size / Weight	12.7×15.3×25.2cm / 0.91kg
Qty/Ctn (Measurement)	24pcs (0.130m <sup>3</sup> )
Gross Weight	23.5kg
JAN	4904710189375

### PRV-A100

1.0L



Clear Satin (CS)

Red (R)

**Made in Japan**

- Vacuum insulated glass liner
- Open/close by slight turn on the stopper

Model No.	PRV-A100
Capacity	1.00L
Heat retention	66°C (10h) / 51°C (24h)
Spare refill	010E
Size / Weight	15.5×12.8×27.0cm / 0.76kg
Qty/Ctn (Measurement)	12pcs (0.072m <sup>3</sup> )
Gross Weight	11.6kg
JAN	(CS) 4904710414712 (R) 4904710414705

### PRY-C190

1.9L



Royal Red (RR)

Royal Blue (AR)

**Made in Japan**

- Vacuum insulated glass liner
- Open/close by slight turn on the stopper

Model No.	PRY-C190
Capacity	1.90L
Heat retention	74°C (10h) / 61°C (24h)
Spare refill	019E
Size / Weight	15.4×20.5×31.0cm / 1.20kg
Qty/Ctn (Measurement)	6pcs (0.062m <sup>3</sup> )
Gross Weight	9.2kg
JAN	(AR) 4904710396872 (RR) 4904710396919

The above images are 1.0L.

### PXJ

1.0L 1.3L  
1.6L 1.9L



Arabian Blue (B)

Arabian Red (R)

**Made in Japan**

- Vacuum insulated glass liner
- Open/close by slight turn on the stopper

Model No.	PXJ-1008	PXJ-1308
Capacity	1.00L	1.30L
Heat retention	66°C (10h) / 51°C (24h)	70°C (10h) / 55°C (24h)
Spare refill	010E	013E
Size / Weight	13.0×17.5×26.5cm / 0.82kg	13.0×17.5×29.5cm / 0.93kg
Qty/Ctn (Measurement)	12pcs (0.073m <sup>3</sup> )	12pcs (0.083m <sup>3</sup> )
Gross Weight	12.1kg	13.7kg
JAN	(B) 4904710305027 (R) 4904710305010	(B) 4904710305003 (R) 4904710304990

Model No.	PXJ-1608	PXJ-1908
Capacity	1.60L	1.90L
Heat retention	72°C (10h) / 58°C (24h)	74°C (10h) / 61°C (24h)
Spare refill	016E	019E
Size / Weight	13.0×17.8×33.9cm / 1.10kg	15.4×20.5×32.6cm / 1.20kg
Qty/Ctn (Measurement)	6pcs (0.050m <sup>3</sup> )	6pcs (0.063m <sup>3</sup> )
Gross Weight	7.9kg	8.9kg
JAN	(B) 4904710304983 (R) 4904710304976	(B) 4904710304969 (R) 4904710304952

The above images are 1.9L.

\*Heat retention has been calculated under the condition of adding hot water at 95°C±1°C and leaving it in a room temperature of 20°C±2°C for 10hours or 24hours.

# Air Pump Jugs

## Stainless steel air pump jugs

### MAA-A

- 2.2L
- 3.0L
- 4.0L

#### Stainless

- Vacuum insulated stainless double wall
- Easy to pump
- Super clean finished process
- Compact and spacious
- 6.9cm wide mouth
- Safety lock function
- Removable pipe
- Removable lid
- 360° swivel base

Model No.	MAA-A222	MAA-A302
Capacity	2.20L	3.00L
Heat retention	69°C (10h) / 53°C (24h)	74°C (10h) / 59°C (24h)
Spare refill	—	—
Size / Weight	17.8×24.5×27.2cm / 1.40kg	17.8×24.5×31.3cm / 1.60kg
Qty/Ctn (Measurement)	4pcs (0.059m³)	4pcs (0.066m³)
Gross Weight	7.8kg	8.7kg
JAN	4904710353325	4904710353349

Model No.	MAA-A402
Capacity	4.00L
Heat retention	78°C (10h) / 63°C (24h)
Spare refill	—
Size / Weight	17.8×24.5×37.2cm / 1.80kg
Qty/Ctn (Measurement)	4pcs (0.076m³)
Gross Weight	9.6kg
JAN	4904710353370



Easy to dispense

The above images are 3.0L.



Stainless (XS)

### MAB-A

- 2.2L
- 3.0L

#### Stainless

- Vacuum insulated stainless double wall
- Easy to pump
- Compact and spacious
- 7.0cm wide mouth
- Safety lock function
- Removable pipe
- Removable lid
- 360° swivel base

Model No.	MAB-A220	MAB-A300
Capacity	2.20L	3.00L
Heat retention	74°C (10h) / 60°C (24h)	78°C (10h) / 64°C (24h)
Spare refill	—	—
Size / Weight	16.5×23.1×30.8cm / 1.50kg	16.5×23.1×36.0cm / 1.70kg
Qty/Ctn (Measurement)	6pcs (0.091m³)	6pcs (0.107m³)
Gross Weight	11.4kg	13.0kg
JAN	4904710359723	4904710359730



Clear Stainless (XC)

The above image is 2.2L.

## Air pump jugs

### PNM-T

- 1.9L
- 2.2L
- 2.5L
- 3.0L

### PNM-B

- 1.9L
- 2.2L
- 2.5L
- 3.0L

#### Made in Japan

- Vacuum insulated glass liner
- Safety lock function
- Removable spout
- Removable pipe
- 360° swivel base

Model No.	PNM-T190	PNM-T220
Capacity	1.90L	2.20L
Heat retention	75°C (10h) / 62°C (24h)	76°C (10h) / 63°C (24h)
Spare refill	019Y	022Y
Size / Weight	18.3×24.3×30.7cm / 1.50kg	18.3×24.3×32.3cm / 1.60kg
Qty/Ctn (Measurement)	6pcs (0.090m³)	6pcs (0.098m³)
Gross Weight	10.4kg	12.9kg
JAN	(XT) 4904710335284	(XT) 4904710335277

Model No.	PNM-T250	PNM-T300
Capacity	2.50L	3.00L
Heat retention	76°C (10h) / 63°C (24h)	78°C (10h) / 64°C (24h)
Spare refill	025Y	030W
Size / Weight	18.3×24.3×34.1cm / 1.70kg	18.3×24.3×36.7cm / 1.80kg
Qty/Ctn (Measurement)	6pcs (0.100m³)	6pcs (0.106m³)
Gross Weight	11.9kg	14.7kg
JAN	(XT) 4904710335307	(XT) 4904710335291

Model No.	PNM-B19S	PNM-B22S
Capacity	1.90L	2.20L
Heat retention	75°C (10h) / 62°C (24h)	76°C (10h) / 63°C (24h)
Spare refill	019Y	022Y
Size / Weight	18.3×24.3×30.7cm / 1.51kg	18.3×24.3×32.3cm / 1.60kg
Qty/Ctn (Measurement)	6pcs (0.097m³)	6pcs (0.101m³)
Gross Weight	12.4kg	12.9kg
JAN	(NS) 4904710282236	(NS) 4904710282212

Model No.	PNM-B25S	PNM-B30S
Capacity	2.50L	3.00L
Heat retention	76°C (10h) / 63°C (24h)	78°C (10h) / 64°C (24h)
Spare refill	025Y	030W
Size / Weight	18.3×24.3×34.1cm / 1.68kg	18.3×24.3×36.7cm / 1.83kg
Qty/Ctn (Measurement)	6pcs (0.107m³)	6pcs (0.113m³)
Gross Weight	13.8kg	14.7kg
JAN	(NS) 4904710282199	(NS) 4904710282175



Stainless Brown (XT)

The above images are 2.2L.



New Satin (NS)

\*Dimensions : width x depth x height

\*For the purpose of performance improvement, designs, specifications and parts shown in this publication are subject to change without notice.

# Electric Water Heaters

## Electric water heater

### PDR-S

- 3.0L
- 4.0L

#### Made in Japan

- 4 temperature settings to choose from (98°C-90°C-80°C-70°C)
- Safety features included
- Energy saving function-Sleep timer settings (6-7-8-9-10 hours)

Model No.	PDR-S30W	PDR-S40W
Capacity	3.00L	4.00L
Available Voltage	220V	220V
Electric Rating	boil 682W	boil 682W
Size / Weight	21.2×28.0×29.4cm / 2.3kg	21.2×28.0×34.4cm / 2.4kg
Qty/Ctn (Measurement)	4pcs (0.114m³)	4pcs (0.129m³)
Gross Weight	12.7kg	13.6kg
JAN	4904710416440	4904710416457



Beige (C)

The above images are 4.0L.



Soft-touch control panel with large LCD for easy operation

Easy to use one touch electric dispense is available.



Removable lid for easy cleaning



Non-stick coated inner pot for easy cleaning



\*Heat retention has been calculated under the condition of adding hot water at 95°C±1°C and leaving it in a room temperature of 20°C±2°C for 10hours or 24hours.

The safety use is our top priority.



**PCD-A**

- 0.8L
- 1.0L



Champagne Gold (NE)



Brown (TE)

The above images are 0.8L.

- Safety lock valve prevents spilling
- Auto shut off system when it boils water
- Double wall structure with inner container and outer body
- One push removable lid

Model No.	PCD-A08W	PCD-A10W
Capacity	0.80L	1.00L
Available Voltage	220V Ⓞ	220V Ⓞ
Electric Rating	1300W	1300W
Size / Weight	14.8x23.0x21.4cm / 1.2kg	14.8x23.0x23.2cm / 1.2kg
Qty/Ctn (Measurement)	6pcs (0.061m³)	6pcs (0.068m³)
Gross Weight	9.6kg	10.1kg
JAN	(NE) 4904710394465 (TE) 4904710394472	(NE) 4904710394489 (TE) 4904710394496

**Technology for safe use**

Lock function minimizes spilling if the unit is tipped over.

Easy to clean, quiet boil kettle with non stick fluorinated coating inner container.

Easy to clean one push removable lid

Double wall structure prevents the outer body from becoming too hot. (Fluorinated inner container and steel case)

One-touch open and close dispense lock button

After boiling the power switch automatically shuts "OFF".

**PFY-A**

- 1.0L



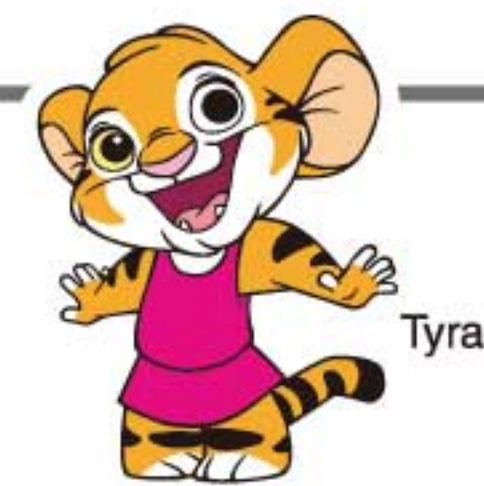
White (WA)



Pink (P)

- Safety lock valve prevents spilling
- Auto shut off system when it boils water
- Double wall structure with inner container and outer body
- One push removable lid

Model No.	PFY-A10W
Capacity	1.00L
Available Voltage	220V Ⓞ
Electric Rating	1300W
Size / Weight	14.8x23.0x23.2cm / 1.2kg
Qty/Ctn (Measurement)	6pcs (0.068m³)
Gross Weight	10.0kg
JAN	(WA) 4904710382646 (P) 4904710382653



© 2003 TIGER CORPORATION

\*Dimensions : width x depth x height

\*For the purpose of performance improvement, designs, specifications and parts shown in this publication are subject to change without notice.

**Rice Cookers**

**JKW-A**

- 5.5-cup
- 10-cup



Urban Beige (CU)

**IH Rice Cooker**

- Black Spherical Inner pot thickness 2.5mm
- 13 Layer metal pot
- Far-infrared ray coating
- Computerized cookin, Multi rice cooking, Slow cooking, Steaming, Brown, Porridge : 8 Menu
- Watch & Timer on LCD control Panel
- Cooking Book : 25 menu



© 2003 TIGER CORPORATION

Model No.	JKW-A10W (5.5-cup)	JKW-A18W (10-cup)
Capacity	1.0L	1.80L
Available Voltage	220V Ⓞ	220V Ⓞ
Electric Rating	cook 1210W	cook 1400W
Size / Weight	26.0x35.5x19.8cm / 3.7kg	28.7x38.3x23.4cm / 4.4kg
Qty/Ctn (Measurement)	2pcs(0.064m³)	2pcs(0.096m³)
Gross Weight	10.1kg	12.0kg
JAN	4904710392744	4904710392751



**JAX-R18W**  
1.8L



Beige(C)

**Made in Japan**

The above image is 1.0L.



Detachable stainless inner lid



Detachable steam release vent for easy cleaning



Scratch resistant inner cooking pot

Model No.	JAX-R18W (1.8L)
Capacity	1.80L
Available Voltage	220V Ⓞ
Electric Rating	cook 918W
Size / Weight	28.1×37.2×24.5cm / 3.8kg
Qty/Ctn (Measurement)	2pcs (0.080m³)
Gross Weight	10.9kg
JAN	4904710418222

**4-in-1 FUNCTIONS**



Synchro-cooking



Multi rice cooking



Slow cooking



Steaming

**What is tacook?**

- Tiger's new synchronized cooking function will bring a new cooking experience.
- Tiger's innovative cooking plate allows the steam from cooking rice to heat and cook the food in the cooking plate.

**Cooking plate + Inner pot = Synchro-cooking**

- 1 Set the washed rice.
- 2 Set ingredients for the main dish.
- 3 Just press the button. The main dish and rice will be ready together.



Cooking plate included for Synchro-cooking and Steam-cooking.



**Many benefits with tacook** Safe Healthy Time Saving Energy Saving

**9 computerized cooking menu settings**



**Cookbook included**



\*Dimensions : width x depth x height \*For the purpose of performance improvement, designs, specifications and parts shown in this publication are subject to change without notice.

**JBV-S**  
1.0L  
1.8L



Beige (C)

**Made in Japan**

The above image is 1.0L.

**tacook**

Rice and a side dish can be cooked simultaneously.



Cookbook included

Model No.	JBV-S10W (1.0L)	JBV-S18W (1.8L)
Capacity	1.00L	1.80L
Available Voltage	220V Ⓞ	220V Ⓞ
Electric Rating	cook 564W	cook 790W
Size / Weight	27.0×35.3×21.4cm / 2.9kg	30.1×38.3×25.5cm / 3.7kg
Qty/Ctn (Measurement)	2pcs (0.077m³)	2pcs (0.092m³)
Gross Weight	8.5kg	10.5kg
JAN	4904710418338	4904710418345

**Easy to view LCD control panel LCD with timer**



Easy to recognize yellow "Start" button has become the universal design.

**Easy to clean non-stick coating inner pot Inner pot thickness 1.7mm**



Using a thick inner pot provides higher thermal conductivity for deliciously cooked rice.

**10 computerized cooking menu settings**



# Commercial Products

## Stainless steel handy jugs

### PWL-B

- 0.62L
- 1.22L
- 1.62L



Stainless (XS)

The above image is 0.60L.

**Super Clean**

**Stainless**

- Vacuum insulated stainless double wall
- Compact and spacious
- Light weight
- Take-apart stopper
- Open/close lever for one hand serving

Model No.	PWL-B062	PWL-B122
Capacity	0.60L	1.20L
Heat retention	54°C (10h) / 35°C (24h)	69°C (10h) / 49°C (24h)
Spare refill	—	—
Size / Weight	11.8×16.5×14.7cm / 0.47kg	12.8×17.4×19.7cm / 0.6kg
Qty/Ctn (Measurement)	12pcs (0.041m <sup>3</sup> )	6pcs (0.031m <sup>3</sup> )
Gross Weight	8.0kg	4.9kg
JAN	4904710353127	4904710353134

Model No.	PWL-B162
Capacity	1.60L
Heat retention	72°C (10h) / 54°C (24h)
Spare refill	—
Size / Weight	12.8×17.4×23.4cm / 0.68kg
Qty/Ctn (Measurement)	6pcs (0.036m <sup>3</sup> )
Gross Weight	5.5kg
JAN	4904710353141

### PWL-A

- 1.2L
- 1.6L
- 2.0L



Stainless (XS)

The above images are 1.2L.



Drip-free spout



Take-apart stopper for easy cleaning



Open/close lock on push lever

**Super Clean**

**Stainless**

- Vacuum insulated stainless double wall
- Compact and spacious
- Light weight
- Take-apart stopper
- Open/close lever for one hand serving

Model No.	PWL-A122	PWL-A162
Capacity	1.20L	1.60L
Heat retention	69°C (10h) / 49°C (24h)	72°C (10h) / 54°C (24h)
Spare refill	—	—
Size / Weight	12.6×17.3×19.6cm / 0.63kg	12.6×17.3×23.3cm / 0.71kg
Qty/Ctn (Measurement)	6pcs (0.030m <sup>3</sup> )	6pcs (0.035m <sup>3</sup> )
Gross Weight	5.0kg	5.7kg
JAN	4904710354636	4904710354759

Model No.	PWL-A202
Capacity	2.00L
Heat retention	75°C (10h) / 59°C (24h)
Spare refill	—
Size / Weight	12.6×17.3×27.1cm / 0.79kg
Qty/Ctn (Measurement)	6pcs (0.040m <sup>3</sup> )
Gross Weight	6.3kg
JAN	4904710354711



## Commercial use rice cooker

### JNO-B

- 3.6L



Stainless (XS)



(B36W only)



(B36W only)

**Made in Japan**

- 20 cups / Commercial use
- Thickness (1.8mm) non-stick inner pot
- Cooking sheet for preventing from scorched rice
- Spatula and measuring cup



Automatic keep-warm function

Model No.	JNO-B36W (3.6L)
Capacity	3.60L
Available Voltage	220V-240V Ⓢ
Electric Rating	cook 1353-1610W
Size / Weight	36.0×42.6×38.3cm / 8.6kg
Qty/Ctn (Measurement)	1pc (0.068m <sup>3</sup> )
Gross Weight	9.9kg
JAN	4904710336038

## Thermal food holders

### JCC-2700

- 15-cup



Stainless (XS)

**Made in Japan**

- 15 cups / Commercial use
- Keep-warm function (up to 12 hours)
- Non-stick inner pot
- Spatula and measuring cup

Model No.	JCC-2700 (15-cup)
Capacity	2.7L
Available Voltage	230-240V Ⓢ
Electric Rating	cook 800-870W
Size / Weight	32.0×37.8×35.2cm / 5.3kg
Qty/Ctn (Measurement)	2pcs (0.113m <sup>3</sup> )
Gross Weight	14.3kg
JAN	4904710299333

### JFM

- 3.9L
- 5.7L



Stainless (XS)

The above image is 3.9L.

**Made in Japan**

- Rigid polyurethane foam insulation

Model No.	JFM-390P	JFM-570P
Capacity	3.90L	5.70L
Temperature retention	76°C (6h)	78°C (6h)
Size / Weight	43.0×36.0×25.0cm / 4.3kg	43.0×36.0×31.0cm / 4.8kg
Qty/Ctn (Measurement)	2pcs (0.094m <sup>3</sup> )	2pcs (0.118m <sup>3</sup> )
Gross Weight	10.1kg	11.4kg
JAN	4904710338803	4904710338810

## Beverage Dispenser

### BPK-100P

- 9.5L



Stainless (XS)

**Made in Japan**



Pours by simply pressing



18.7cm wide mouth

Model No.	BPK-100P
Capacity	9.5L
Temperature retention	Hot 68°C (6h) Cold 10°C (6h)
Size / Weight	24.5×27.0×36.1cm / 1.6kg
Qty/Ctn (Measurement)	6pcs (0.142m <sup>3</sup> )
Gross Weight	12.6kg
JAN	4904710279274

## Rice dispenser

### RFC

- 18.0kg
- 23.0kg
- 33.0kg



Green (G)

White (W)

The above images are 18.0kg.

**Made in Japan**

- Big capacity rice dispenser

Model No.	RFC-1800	RFC-2300	RFC-3300
Capacity	18.0kg	23.0kg	33.0kg
Size / Weight	25.0×30.0×61.5cm / 4.3kg	25.0×30.0×68.5cm / 4.6kg	25.0×30.0×82.5cm / 5.3kg
Qty/Ctn (Measurement)	1pc (0.072m <sup>3</sup> )	1pc (0.080m <sup>3</sup> )	1pc (0.094m <sup>3</sup> )
Gross Weight	5.2kg	5.6kg	6.4kg
JAN	(G) 4904710236222 (W) 4904710234815	(G) 4904710236246 (W) 4904710236253	(G) 4904710236307 (W) 4904710236314

\*Temperature retention has been calculated under the condition of adding hot water at 95°C±1°C and leaving it in a room temperature of 20°C±2°C for 6 hours.

\*Temperature retention has been calculated under the condition of adding hot water at 95°C±1°C and leaving it in a room temperature of 20°C±2°C for 6 hours.

## TIGER CORPORATION HISTORY

The start of Tiger Corporation's history was our founder wanting everyone to be able to enjoy the warmth of a cup of hot tea just like mom made, at any time they like.



The first trademark



In 1923, An oval-shaped water bottle

1923

Torajirushi (Tiger) Vacuum Bottle Company is created in Osaka, Japan by Takenori Kikuchi.

1953



Name was changed to Tiger Vacuum-Bottle Industry Co., Ltd.

1963



Tiger's home office and factory moved to its current location in Kadoma City, Osaka.

1983

Name was changed to Tiger Vacuum Bottle Co., Ltd.



Yoshisato Kikuchi was appointed president.

1999



TIGER CORPORATION U.S.A. was established in Torrance, CA.

2002



First in the industry to release an IH rice cooker which had a ceramic inner pot.

2006



TIGER VIETNAM CO.,LTD. was established.

2012



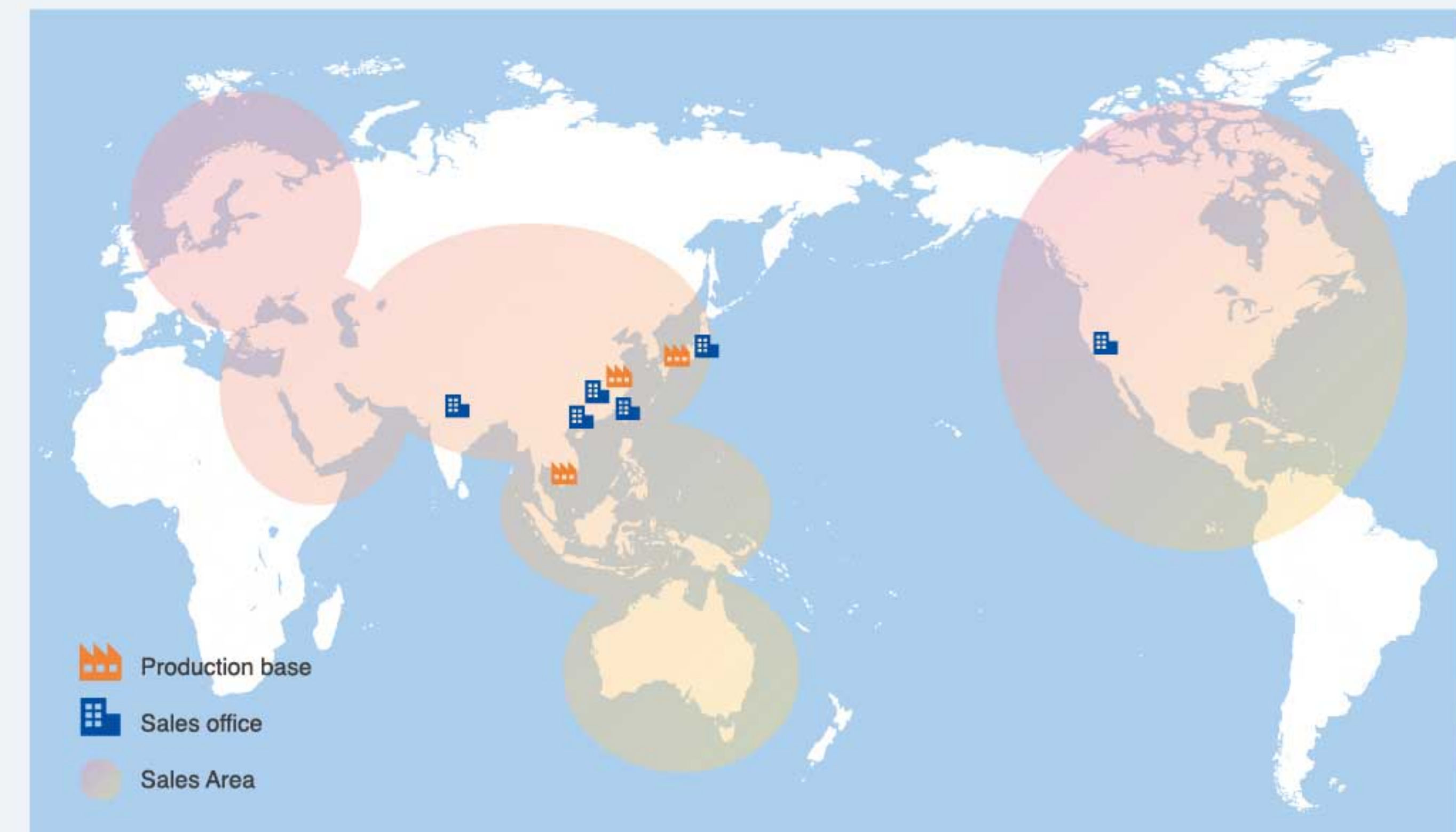
TIGER INDIA PRIVATE LIMITED was established.

2015



Tig Tyra  
© 2003 TIGER CORPORATION

## GLOBAL SITE



### OFFICE ADDRESS

● Head office & Production base

**TIGER CORPORATION**

3-1 Hayami-cho, Kadoma City Osaka, 571-8571, JAPAN

● Sales office

**TIGER INDIA PRIVATE LIMITED**

Unit No.108, 1st Floor, Suncity Business Tower, Golf Course Road, Sector 54, Gurugram, Haryana 122002, India

● Sales office

**TIGER CORPORATION U.S.A.**

1815 W. 205th Street, Unit 106, Torrance, CA 90501, USA

● Production base

**SHANGHAI TIGER-BORN ELECTRONIC & ELECTRICAL APPLIANCES CO., LTD.**

No.4228, Sanlu Road Pujiang Town Minhang Dist, Shanghai, China

● Sales office

**TIGER HANBAI (SHANGHAI) CO., LTD.**

Room 1903 Charity Building.no.88 North Caoxi Rd.Xuhui District, Shanghai, China

● Sales office

**TIGER VACUUM BOTTLE, TAIWAN Co., Ltd.**

No. 63 Xinle Road, 702, Tainan City, Taiwan

● Sales office

**TIGER CORPORATION (HONG KONG) LIMITED. 虎牌產品(香港)有限公司**

Rm. 1006B, 10/FI., Join-in Hang Sing Centre, 71-75 Container Port Road, Kwai Chung, N.T., Hong Kong

● Production base

**TIGER VIETNAM CO.,LTD.**

Plot229, Amata Road, Amata Industrial Park, Long Binh Ward, Bien Hoa City, Dong Nai Province, Vietnam